



## The women's body warmer

Fitted

XS > XXL

75 GSM

### Details

- Sleeveless
- High collar
- Reverse nylon zip at center front
- Zipped welt pockets with extra grosgrain puller
- Elastic tape binding at armhole
- Fully quilted
- Side panels for better shape
- Inside seams with binding finish
- Bottom hem with adjustable plastic stopper and elastic cord

### Composition

Shell - Plain Weave  
 100% Polyester - Recycled - , 75.0 GSM  
 Fluorine-free DWR  
 Padding  
 100% Polyester - Recycled -

Lining - Plain Weave  
 100% Polyester - Recycled  
 Fluorine-free DWR



Made with 80% GRS recycled polyester  
 Certified by Control Union  
 CL159454



www.oeko-tex.com



### Care

Wash similar colours together, no ironing, wash inside out. Close all zips before washing.



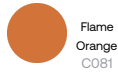
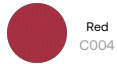
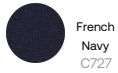
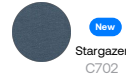
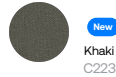
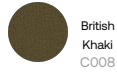
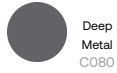
### Country of origin

Weaving : China  
 Dyeing : China  
 Assembly : Bangladesh or China

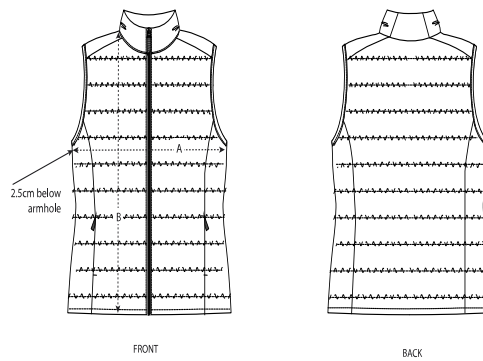
**Whites**



**Colors**



**Size Guide**



Sizes		XS	S	M	L	XL	XXL
A	Half Chest	47	50	53	56	59	62
B	Body Length	58	60	62	64	66	68

**Packing**

Sizes	XS	S	M	L	XL	XXL
Pieces/bag	5	5	5	5	5	5
Pieces/box	10	10	10	10	10	10